

# **TOTAL MAXIMUM DAILY LOAD (TMDL)**

For

**Siltation, Turbidity, and Habitat Alteration**

**In Shades Creek**

**Jefferson County, Alabama**

Prepared by:

US EPA Region 4  
61 Forsyth Street SW  
Atlanta, Georgia 30303

October 2004





















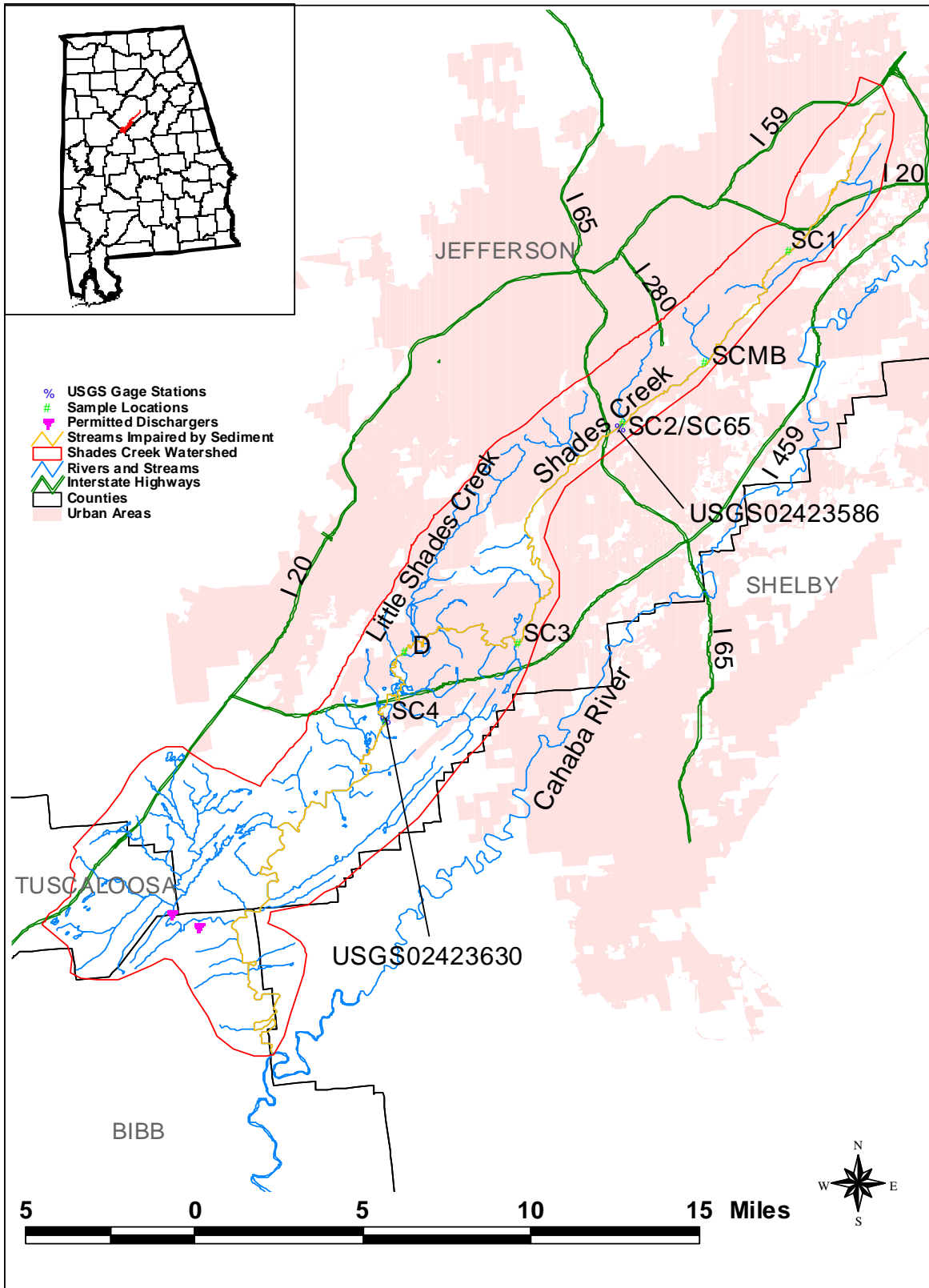


Figure 1. Shades Creek watershed

















































































