

Our story is further explained in the **RED MOUNTAIN MUSEUM** exhibit building, adjacent to the cut. Here exhibits will take you through our **"WALK THROUGH TIME."** How did our planet develop? What powerful forces have shaped and continue to sculpt this magic sphere? How has the miracle of life progressed through time? We don't have complete answers to these questions, but we do have exciting and entertaining displays which will help you understand the latest scientific knowledge of our planetary history.



Detail from mural.



Our friendly dinosaur, Seymour.



Fossil whale tooth.

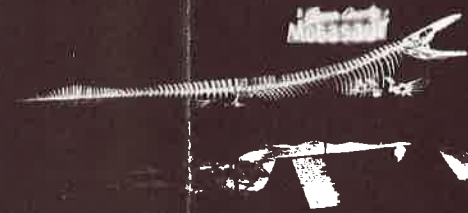


33' mural in museum.

DID YOU KNOW THAT:

Alabama was once covered by an ocean?

Eighty-five million years ago, giant aquatic lizards—called **MOSASAURS**—dominated that sea. Fourteen feet long and ferocious, one of these creatures can be seen on permanent display, part of our extensive fossil collection.



Dinosaurs are related to birds?

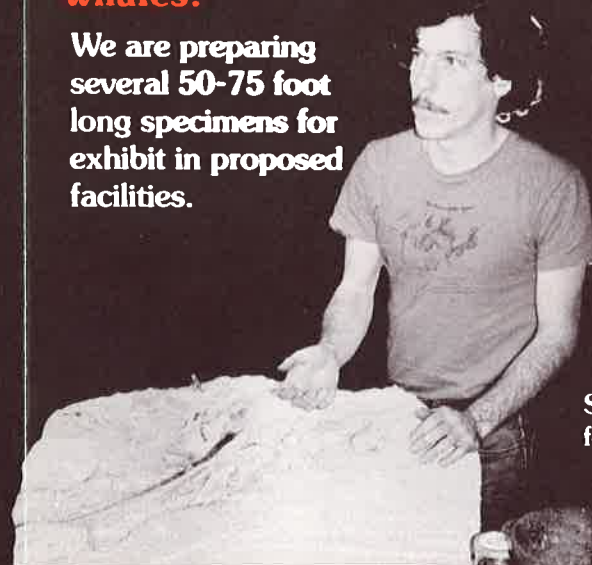
An eleven minute audio-visual display amusingly and dramatically tells the story of these fascinating reptiles.



AV "Theatre."

Alabama is one of the best locations in the world for well-preserved fossils of whales?

We are preparing several 50-75 foot long specimens for exhibit in proposed facilities.



Staff paleontologist with fossil whale material.

Sun, as it appears through RMM Solar Telescope.



There is a safe and spectacular way to see the sun?

Watch the sun daily as our newly-installed **SPECTROHELIOSCOPE** (solar telescope) brings the sun's rays into focus, providing you with detailed views of sunspots, prominences, and solar flares.

See inside for **PROGRAMS** and **SOUVENIR POSTER.**